



SOUTHDOWNNS PRE-K CENTER NOVEMBER 2023- NEWS

BRIDGING HOME AND SCHOOL

- We all know that if a bridge is not structurally sound, it will eventually collapse. Likewise, if relationships are not built on a sturdy foundation, they too will fall. Too often, parents and program staff are intimidated by each other. But by willingly beginning the home/school relationship with an open, sharing approach, we can build trust. Then, when issues arise~ even sticky ones~ we can talk about them without hesitation. All of us here try to do our best to keep you informed. We post pertinent information on the parent bulletin board as well as include it in the newsletters. We send home other information with the children. We also want to talk with each of you oftenshow us something special. Clearly, ongoing interaction and support from both families and staff make

the connection between home and school a two-way street. You can help by sharing information about your child with us. Especially during any crisis or period of change in jobs, a move to a new house, or an illness or death in the family, but they also could involve the child experiencing nightmares, making changes in eating habits, and stopping or starting medication. Of course, anything you share with a member of our staff will be held in confidence. In turn, we will alert you to anything out of the ordinary. That way, we build a bridge strong enough to support our children.

Southdownns Pre-K Center
2050 Hood Ave. 70808

<http://www.ebrschools.org>
225-346-1127 office
225-381-7228 fax
225-343-6529 cafeteria
225-960-2161 nurse

Dates to Remember

- 11/1 -9 Disguise a Turkey
- 11/1- 16 Food Drive begins
- 11/2 Holiday Pictures taken
- 11/9 Fall Festival
- 11/14 Smoothie King Day
- 11/16 Silly Stuffed Animal Day
- 11/20- 24 Thanksgiving Holidays
- 11/27 Students return to school
- 11/28 Sock Drive Begins

NATIONAL EPILEPSY AWARENESS MONTH

November is National Epilepsy Awareness Month. To spotlight this, we will host several events. Watch for additional information!

CHILD ABUSE AND NEGLECT- Did you know that teachers are required by law to report suspected cases of abuse or neglect? The Louisiana Children's Code provides the following definitions of abuse and neglect: **Abuse** - is defined as any one of the following acts which seriously endanger the physical, mental, or emotional health of the child:
*The infliction, attempted infliction, or as a result of inadequate supervision,

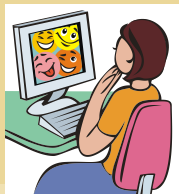
the allowance of the infliction or attempted infliction of physical or mental injury upon the child by a parent or any other person.
*The exploitation or overwork of a child by a parent or any other person.
*The involvement of the child in any sexual involvement with any other person or of the child's involvement in pornographic displays, or any

other involvement of a child in sexual activity constituting a crime under the laws of this state.

Neglect - is defined as the refusal or willful failure of a parent or caretaker to supply the child with necessary food, clothing, shelter, care, treatment, or counseling for any injury, illness or condition of the child, as a result of which the child's physical, mental, or emotional health is substantially threatened or impaired.

SCHOOL WEBSITE

Our school's website is a great way for families to learn about our school and our school-sponsored events. Mr. Andrew Seba does an excellent job as our resident "webmaster" and makes updates on a regular basis. Please click on <http://www.ebrschools.org> go to schools, then school directory and click on Southdowns.



DID YOU KNOW?—Parents are a child's first and most important teacher. Please be a good teacher.



ARRIVAL AND DISMISSAL REMINDERS - For safety reasons, please do not walk up to the duty area to drop off or pick up your child. We ask that you remain in your car and allow one of our duty personnel to assist your child.

PBIS UPDATE - Did you know that each area of our campus have rules? The rules are expectations that we have for our students when they are in that area.

COMMUNITY COFFEE UPC's

Please remember to send all UPC's (bar codes) from any Community Coffee product to our school. We are able to redeem them for cash.

NEED FOR SUB TEACHERS

If you are interested in substituting in our school system, please go to ESS.com to apply. All schools need good substitute teachers.



FACEBOOK -

Follow our school on facebook!
"Southdowns Pre-K Center"

SAFETY UPDATE - Did you know that our staff wear name tags or ID badges to help make our school a more secure place for everyone?

QUESTION: How can I help my child get ready to read?

ANSWER: Introduce new words to him.

INCLUSION IS... the development of friendships! Inclusion affords students with and without disabilities opportunities to become friends.

NURSE'S NOTES

COMMON CORE STATE STANDARDS

FROM NURSE Amber— HEALTH CLINIC CORNER

It's time for lots of holiday preparation and of course, cold and flu season. Reminder, no Flu Vaccine will be given at school this year. Please make sure your child receives the Flu Vaccine by the end of November. It takes 2 weeks for the vaccine to be fully effective and the Flu season begins to peak in December. Don't forget to get one yourself. Parents often forget to take care of themselves.

When the weather turns cooler, people tend to stay inside more and get more colds. Remember to get fresh air, eat healthy, get plenty of rest, avoid people who have a contagious disease and practice **good hand washing** often!

To keep our students well, we ask that you keep your child home when they are sick. They must be free from fever, vomiting or diarrhea for 24 hrs without

medication before returning. One person with a bad cold or flu can make many others sick.

A reminder: Medications cannot be sent to school with the student. They **must** be delivered by an **adult and signed in.** If you need to reach me call (225) 960-2161, Monday -Friday 7:30 - 3:30. Nurse Amber.



What is the goal of the CCSS?

The goal of the CCSS is to make sure that all students are well prepared for college, technical education, or the workplace after high school graduation.

Why is it important for your child to have good attendance?

Children are more likely to develop important skills when they have good attendance.

SCHOOL ATTENDANCE POLICY -

Attendance is very important. Please remember to call the school office when your child will be absent and to send a parent note or doctor's excuse when possible.

NOVEMBER HOLIDAYS -

Thanksgiving Holidays -

November 20-24, 2023

Students return to school on

November 27, 2023

CAR POOL TIPS

Please remember to keep all children in secure seat belts at all times. This is a law!

Remember to always display you carpool tag.

~ Please wait until a duty teacher opens your car door before allowing your child to leave the car. This is for the safety of your child! ~Remember that it may take extra time to assist our preschool students into and out of cars and busses. Please be patient and **do not** pass cars in the carpool line where adults are helping children.



Be patient,
Be courteous
Be safe

QUESTION: How can families help teachers?

ANSWER: Prepare for a happy landing at the end of the school day by listening to your child for ten minutes as he shares school events.

EMERGENCY CARDS – Please remember to update your child's emergency card as changes occur. We must have working telephone numbers and the names of individuals who may pick your child up from school. All changes or additions must be made by the parent. Thank you.

FUND RAISER:

THANK YOU! To all who sold and bought items from our Cookie Dough and Candy Sale fundraiser. Thanks to your hard work and support to help buy materials and supplies for our students.



NUT FREE CAMPUS

Our School is a nut free campus. For the safety of all students and staff members, we ask that you do not send any food items to school that contain nuts and nut products.

OUR MISSION STATEMENT

*The faculty and staff of
Southdowns' will provide a quality pre-school
education in a nurturing and safe
environment to prepare students for the future.*

THANK YOU FOR SHARING YOUR CHILD WITH US!

CHECK FREE CAMPUS - Our school cannot accept personal checks. We will only accept cash and money orders. Thank you for adhering to this policy.



Food Drive- Our School is currently collecting non-perishable food items for the Baton Rouge Food Bank. Please help fill our barrels before November 16th!

SOCK DRIVE - Did you know that socks are the most requested item in homeless shelters? Our school is also participating in a sock drive to benefit area homeless shelters. Please help us fill our boxes by sending some socks before December 8th



MAGNET APPLICATION DEADLINE -

If you are considering applying for acceptance into one of the magnet schools in EBR, go online to ebrschools.org to apply by December 1, 2023.