

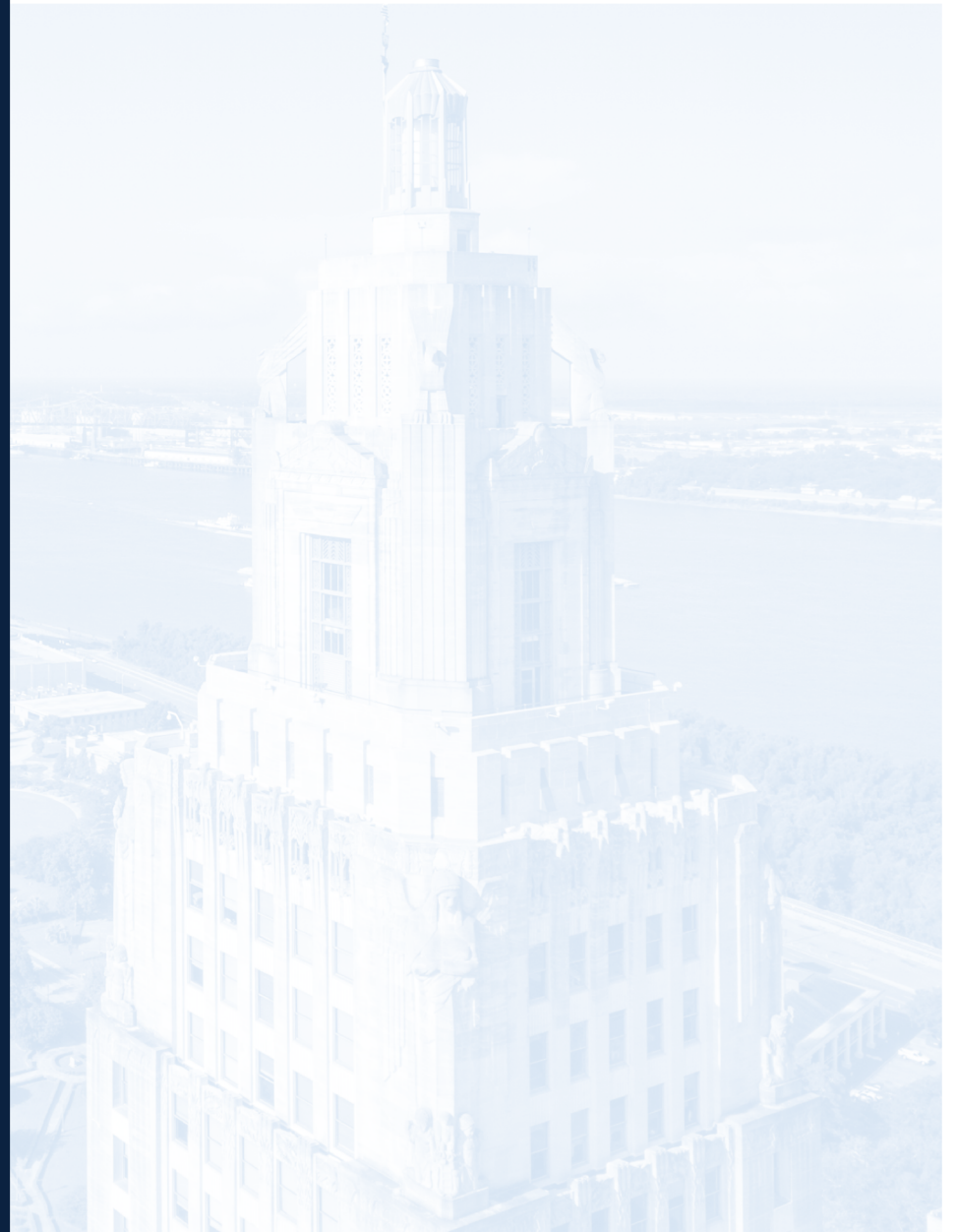


2025 EBR Organizational Chart

LaMont Cole

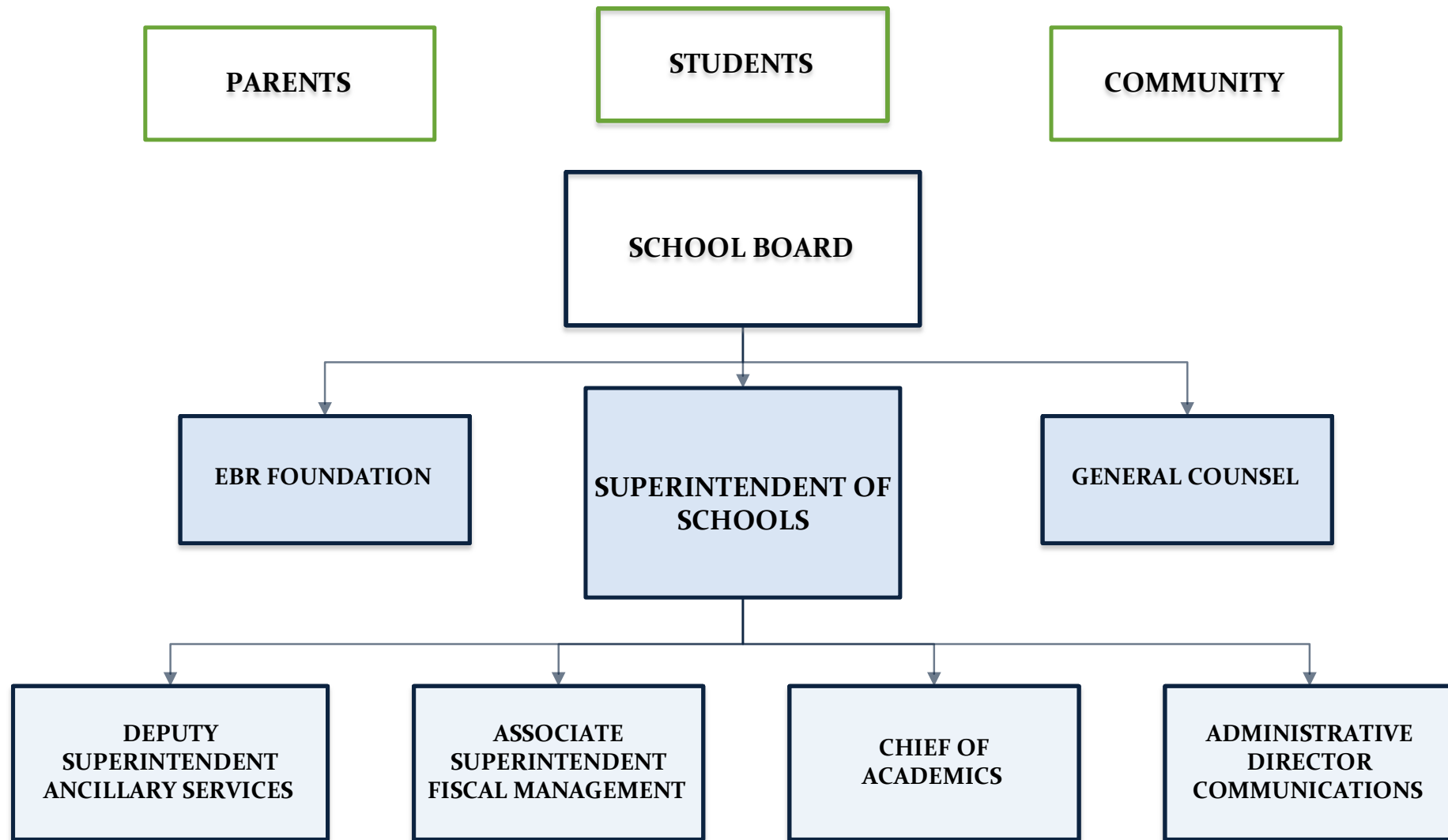
Superintendent of Schools

June 1, 2025



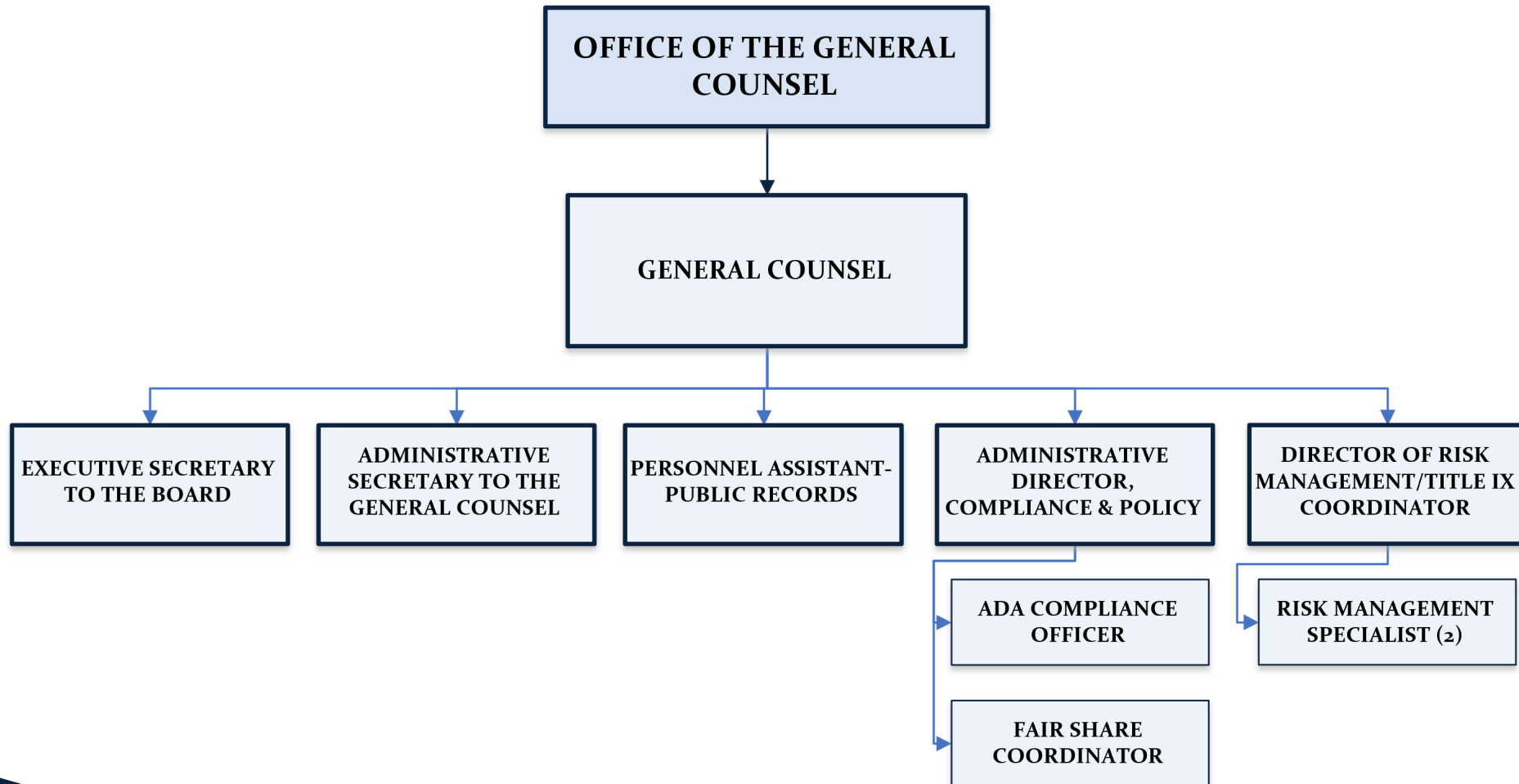
EAST BATON ROUGE PARISH SCHOOL SYSTEM

ORGANIZATIONAL CHART



EAST BATON ROUGE PARISH SCHOOL SYSTEM

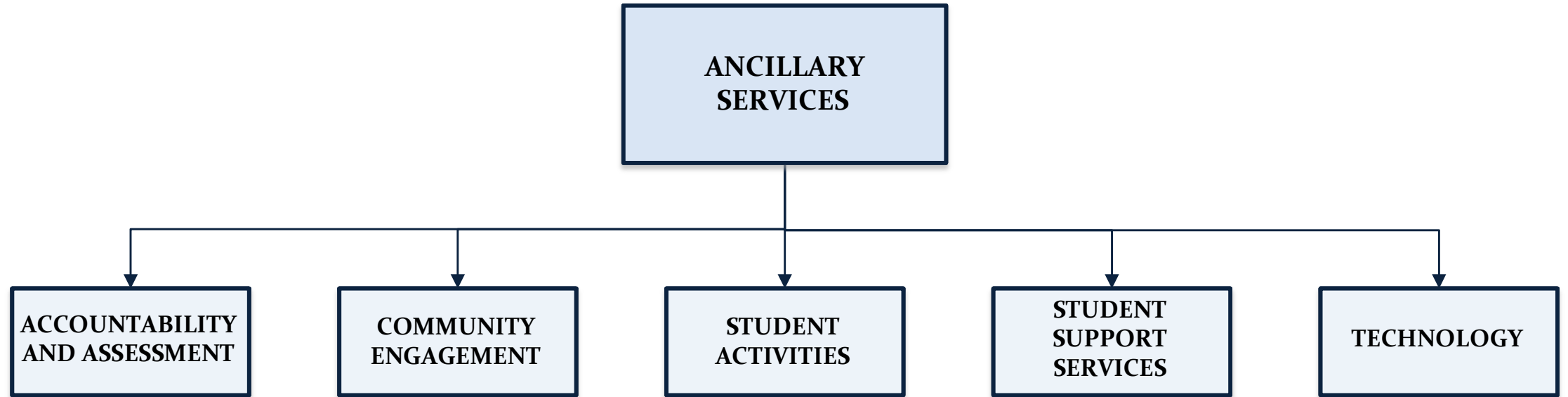
ORGANIZATIONAL CHART

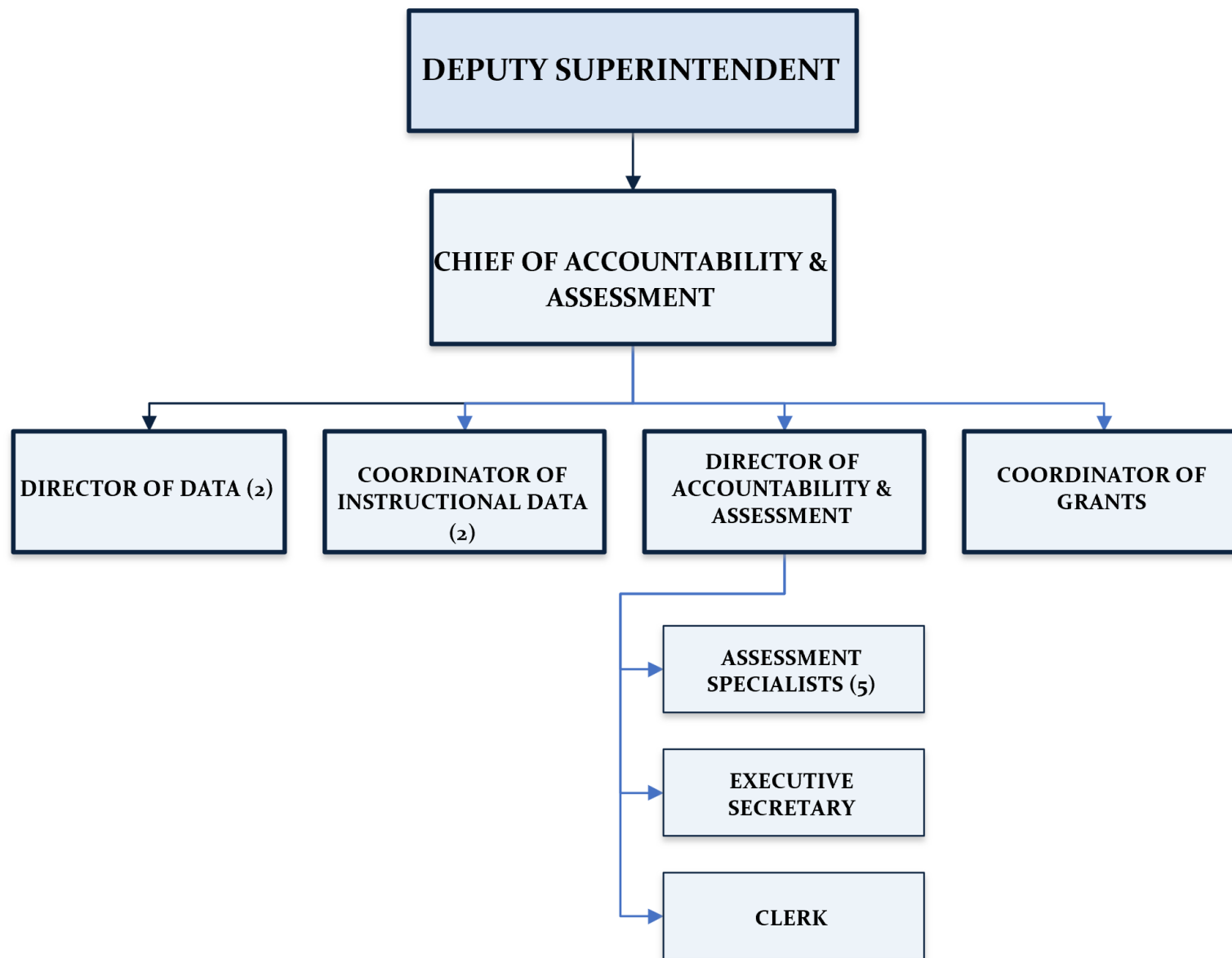


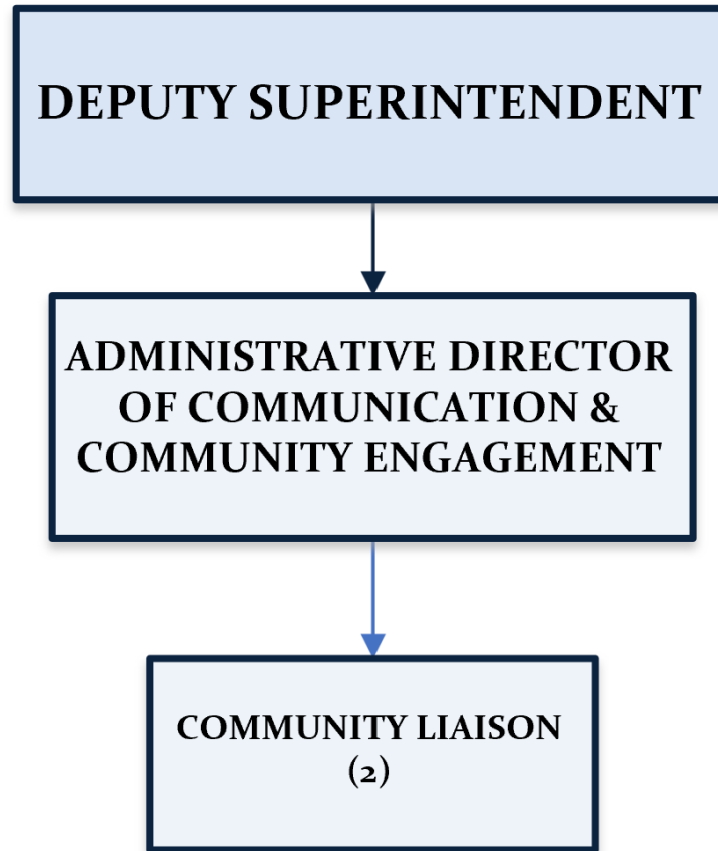
Departments within the Office of the General Counsel

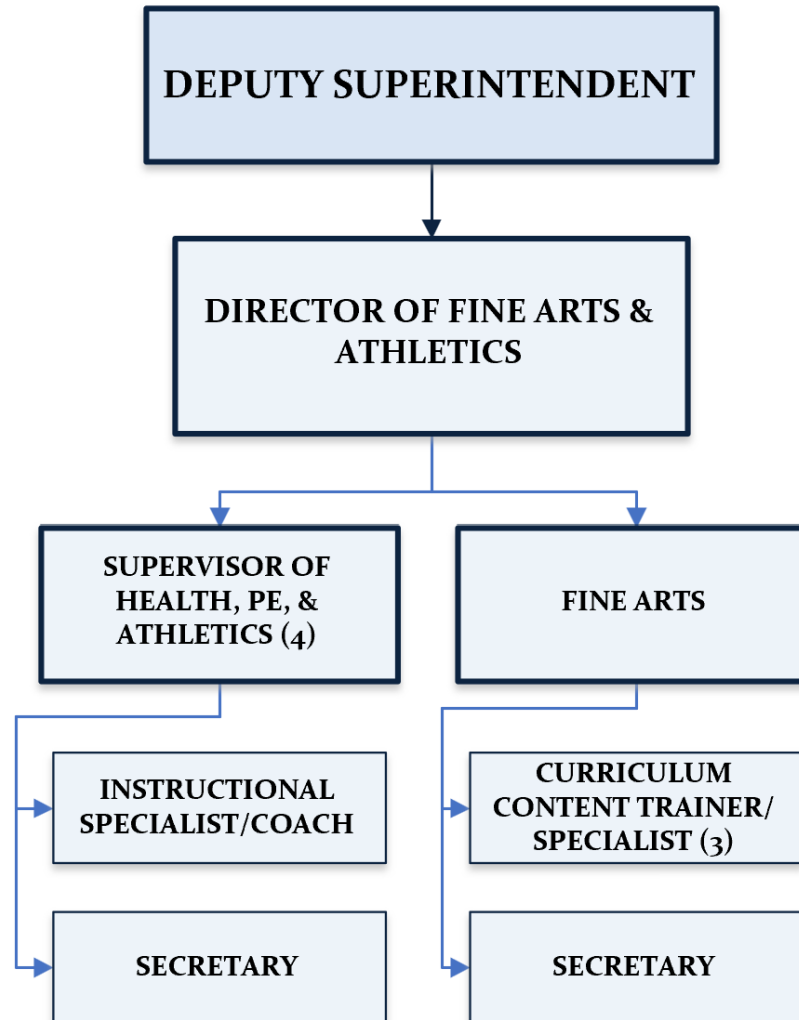
EAST BATON ROUGE PARISH SCHOOL SYSTEM

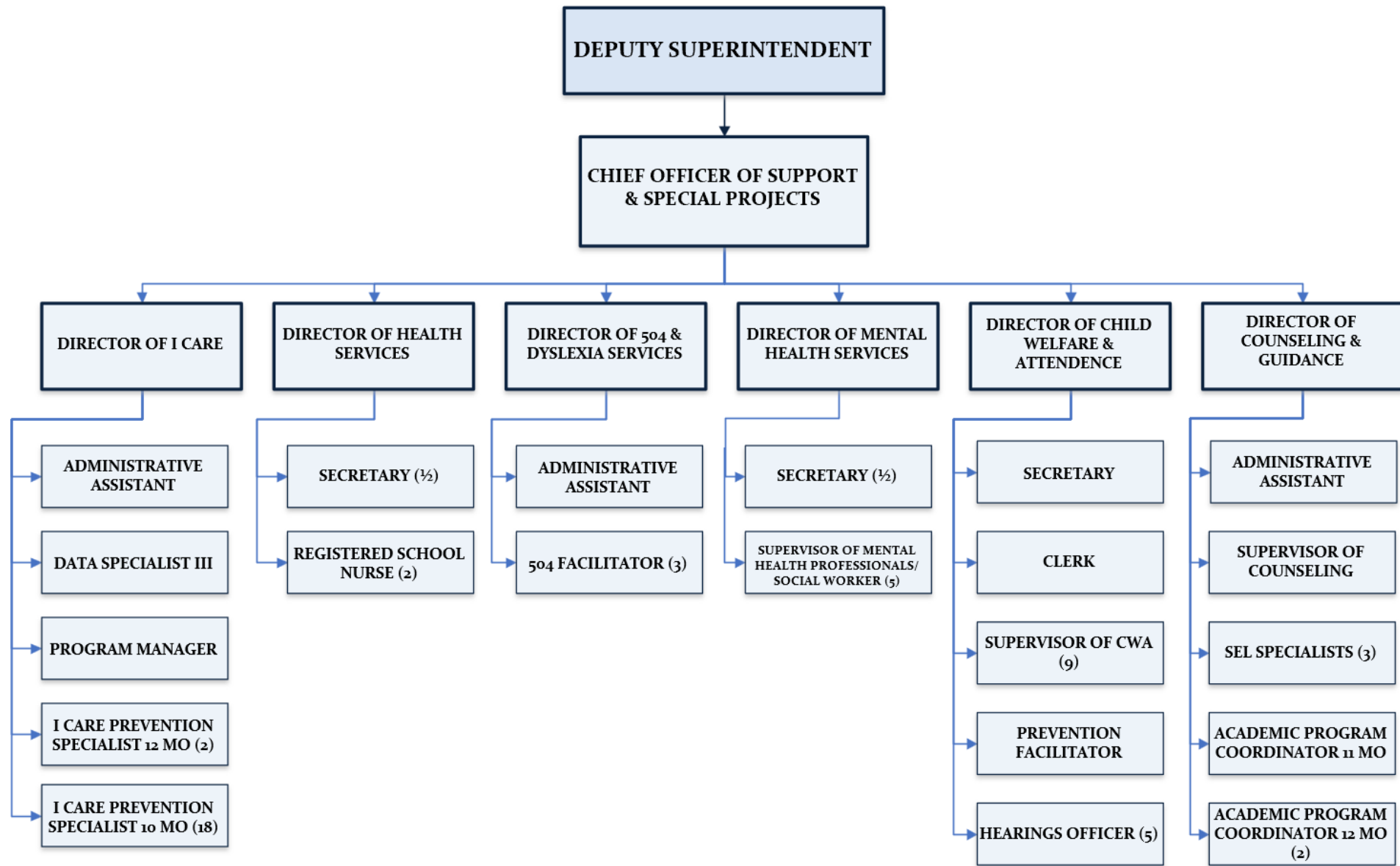
ORGANIZATIONAL CHART

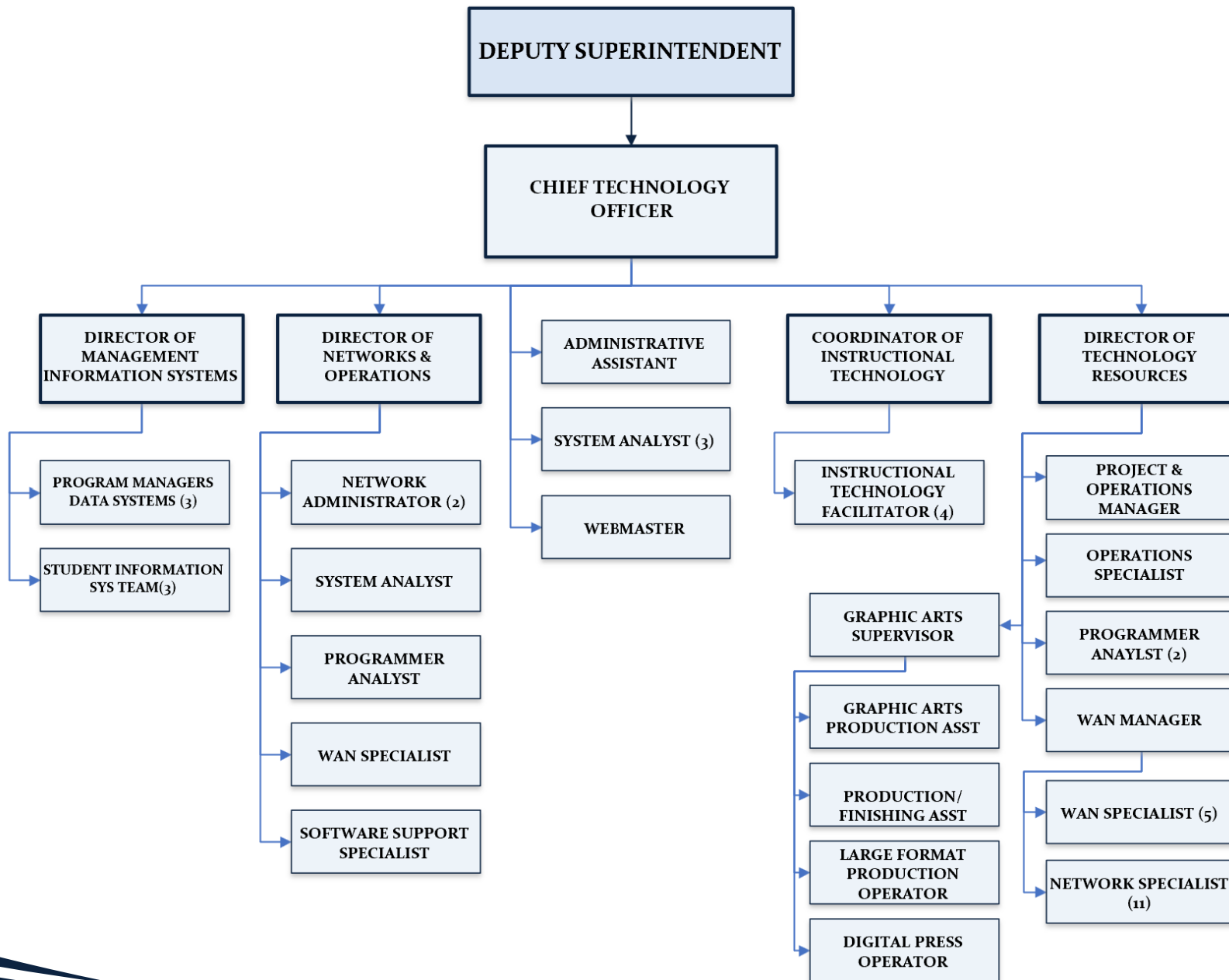






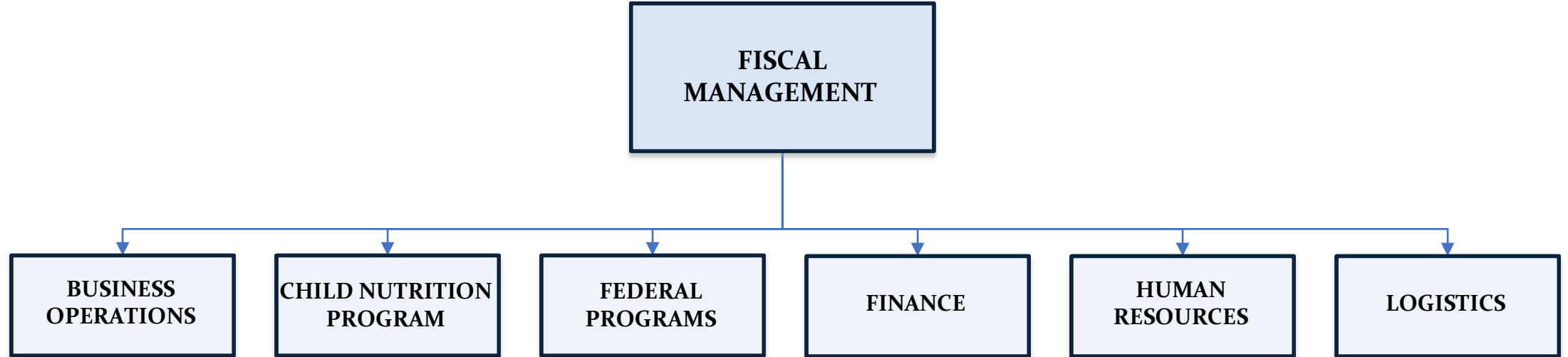




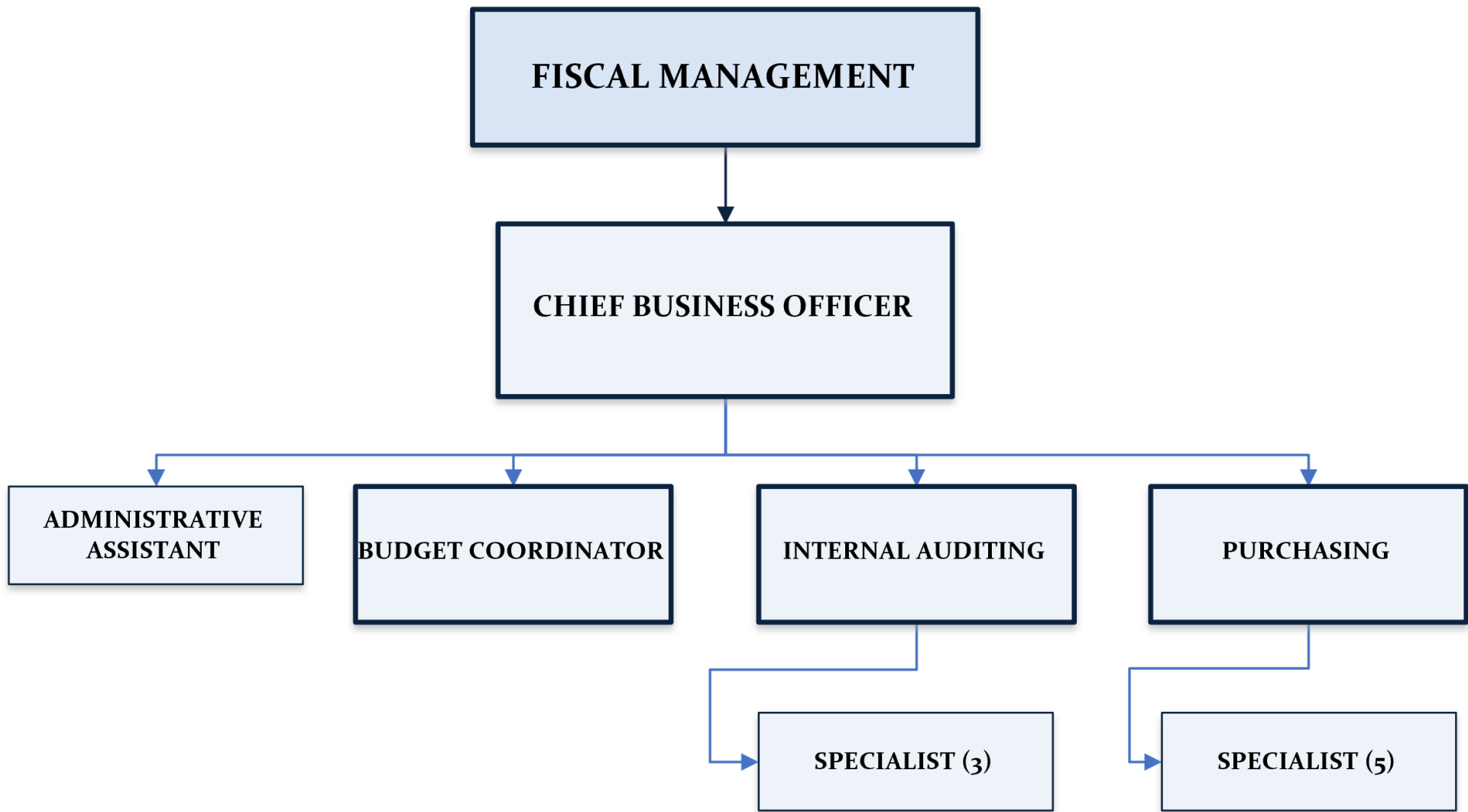


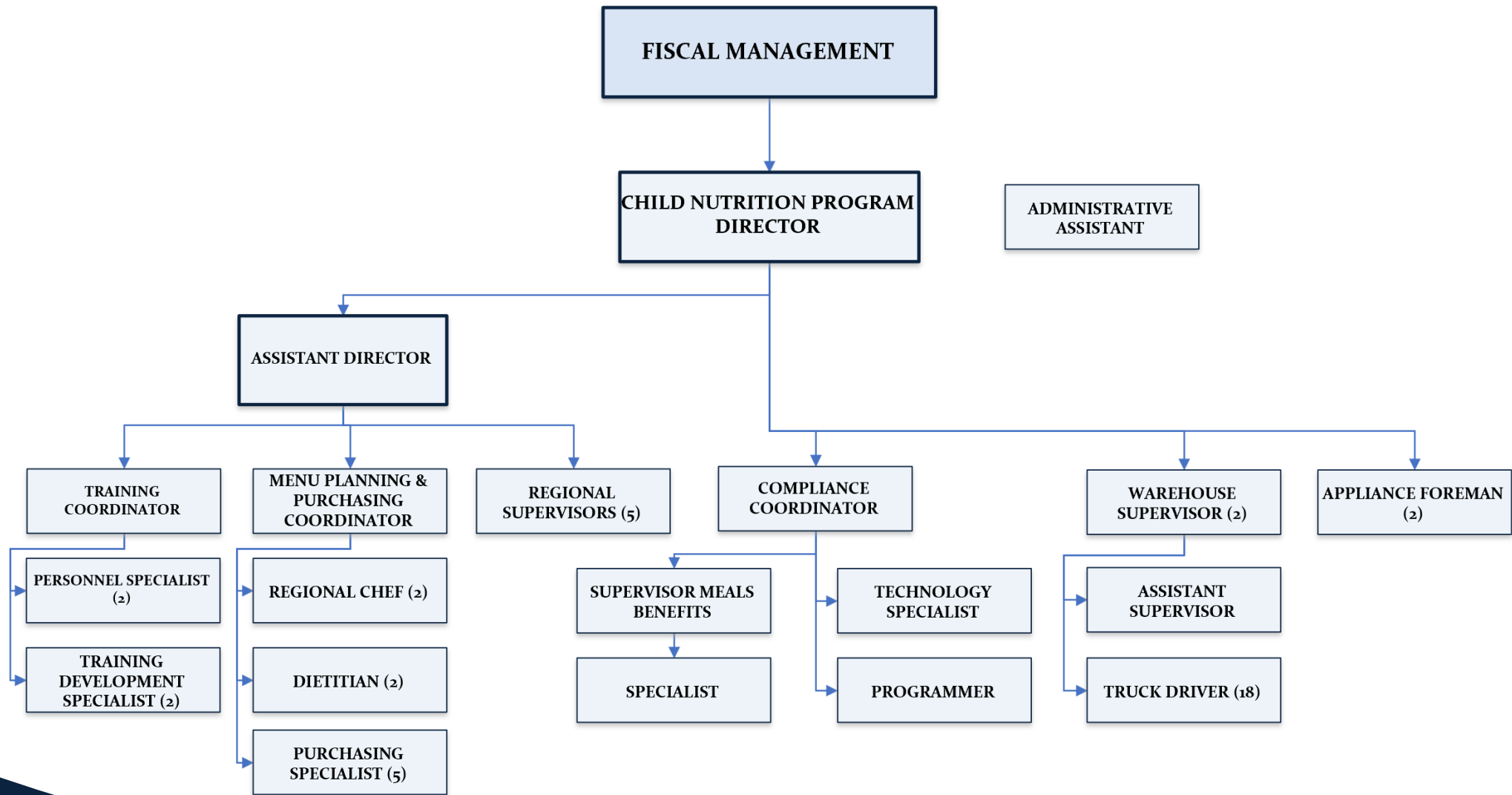
EAST BATON ROUGE PARISH SCHOOL SYSTEM

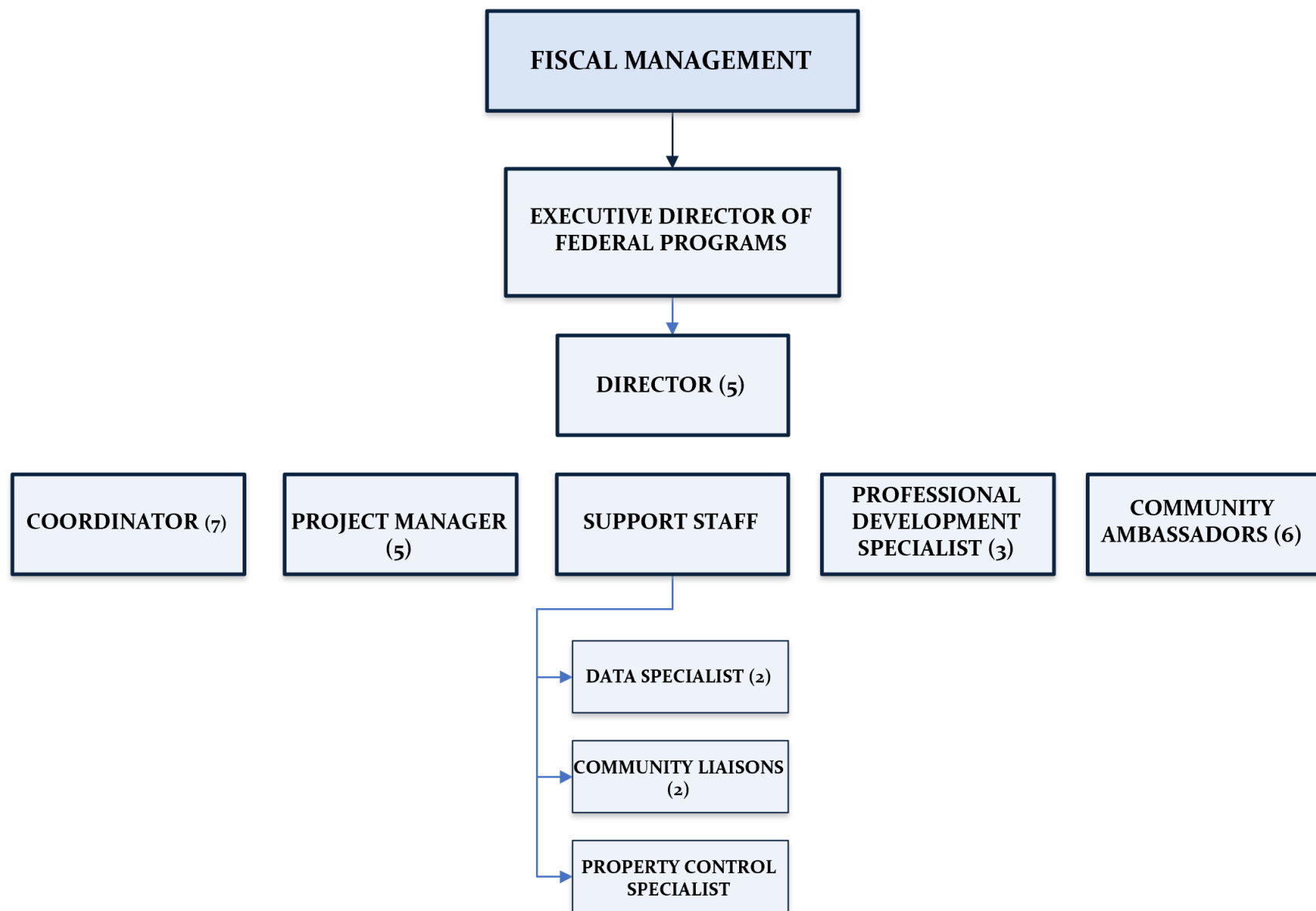
ORGANIZATIONAL CHART

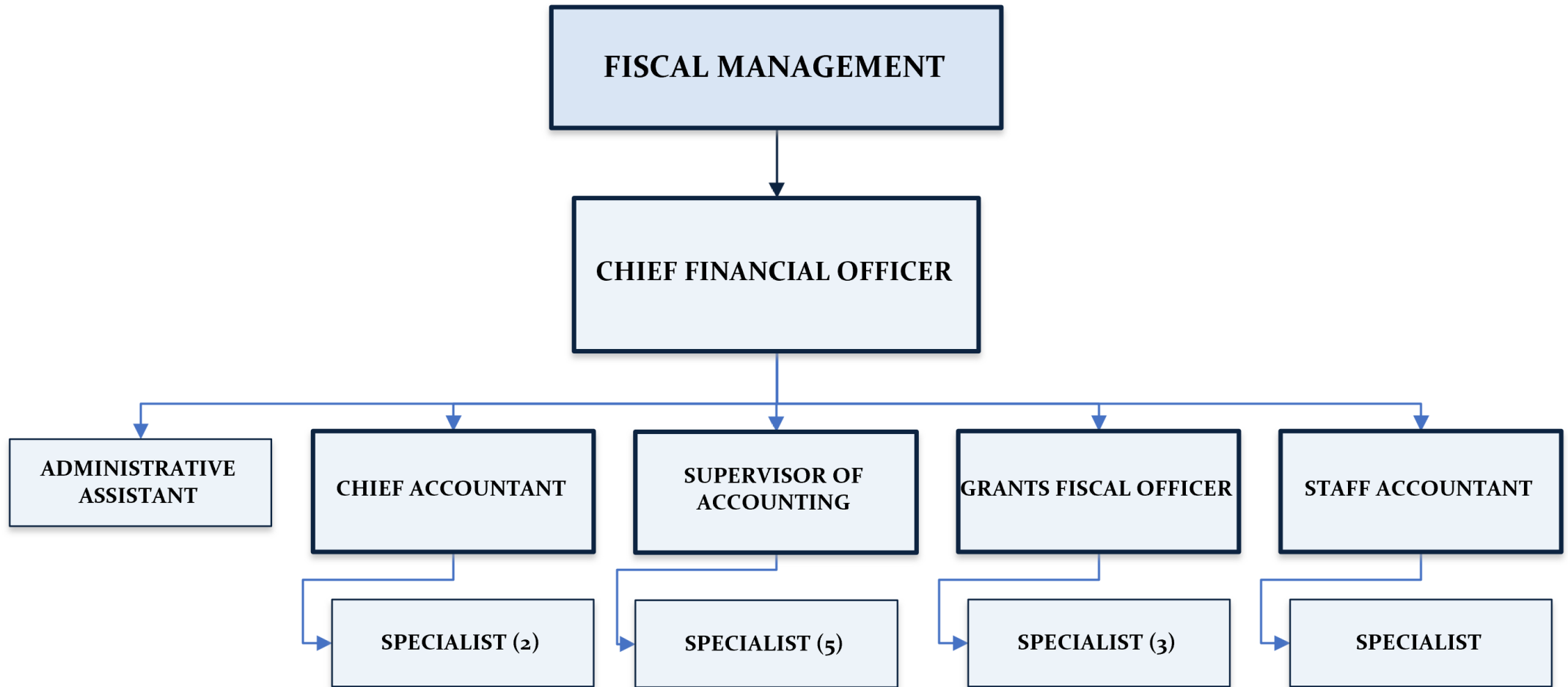


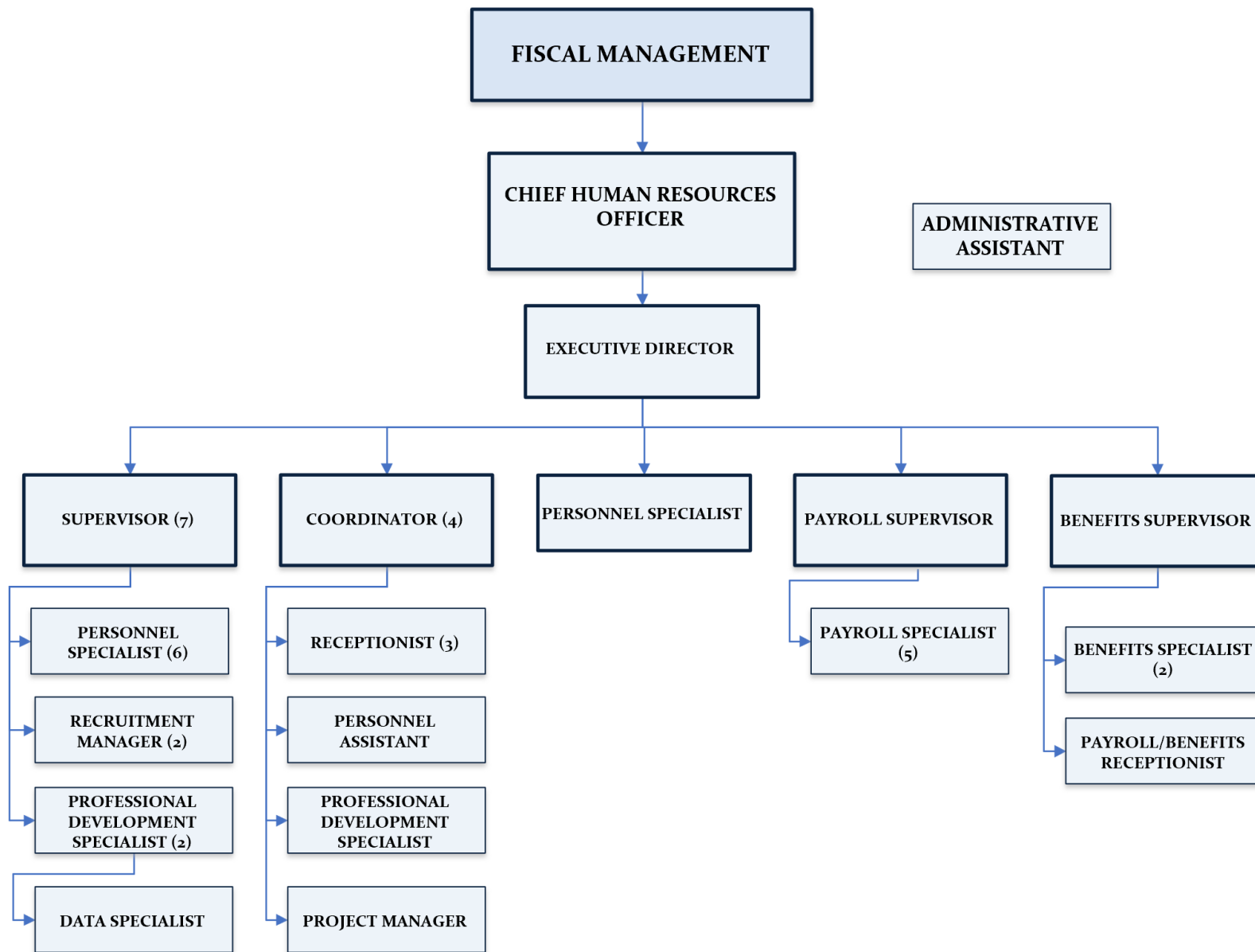
Departments within Fiscal Management

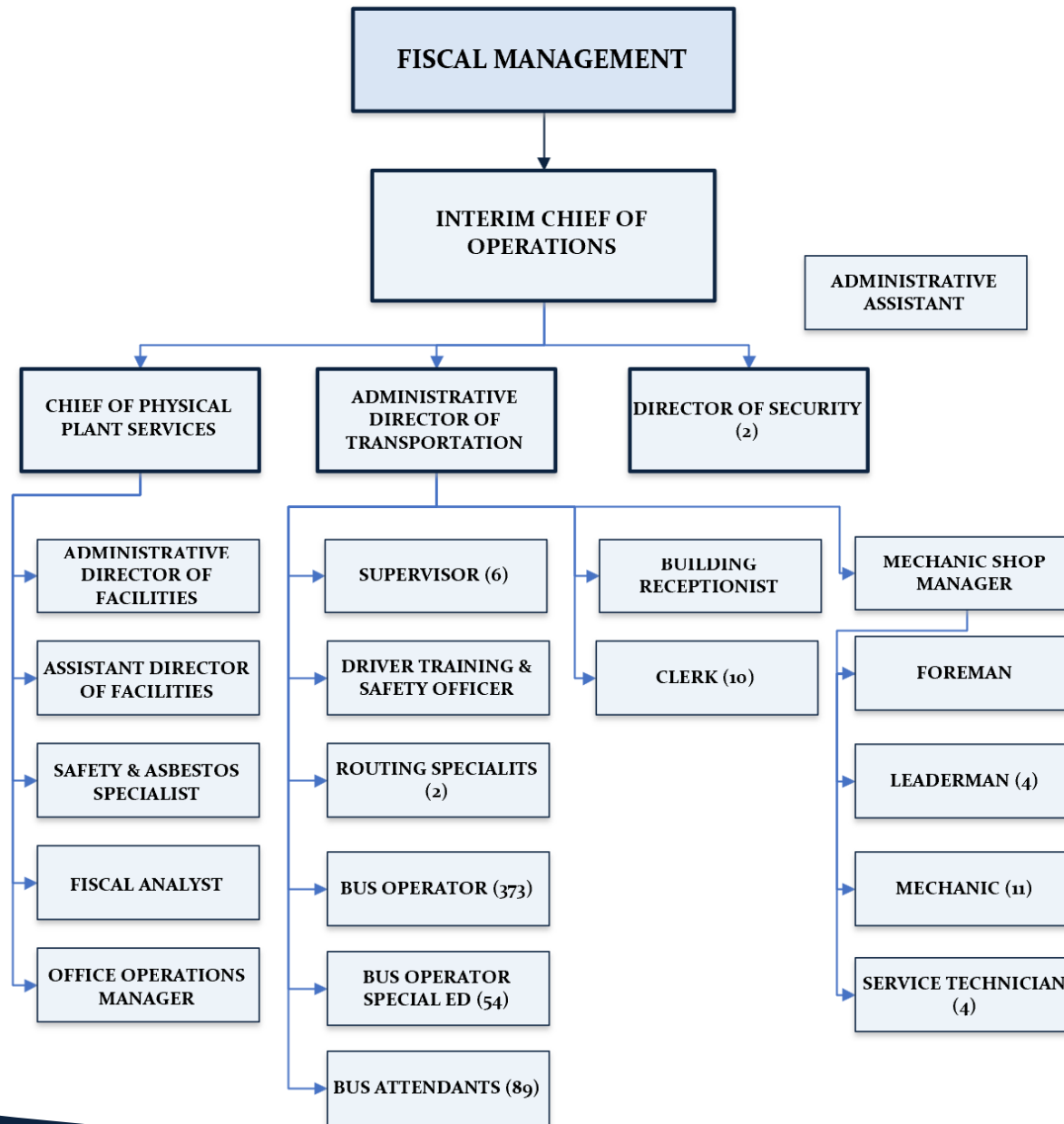






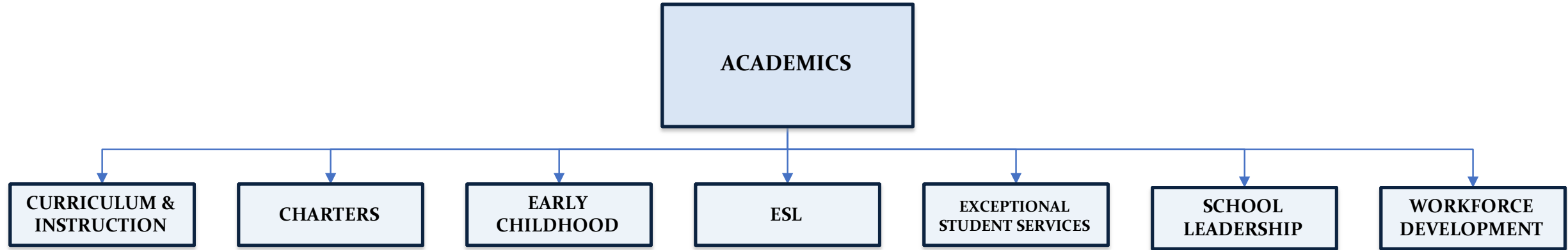






EAST BATON ROUGE PARISH SCHOOL SYSTEM

ORGANIZATIONAL CHART



Departments within Academics

CHIEF ACADEMIC OFFICER

EXECUTIVE DIRECTOR OF CURRICULUM & INSTRUCTION

EXECUTIVE DIRECTOR OF CHARTER SCHOOLS

EXECUTIVE DIRECTOR OF EARLY CHILDHOOD

CONTENT SUPERVISOR (4)

DIRECTOR OF PROFESSIONAL DEVELOPMENT (2)

DIRECTOR OF LITERACY

DIRECTOR OF LIBRARY SERVICES

CURRICULUM CONTENT TRAINER

COUNSELOR SUPPORT

COORDINATOR

ADMINISTRATIVE DIRECTOR OF EARLY CHILDHOOD

DIRECTOR OF EARLY CHILDHOOD

RESOURCE DEVELOPMENT SPECIALIST (2)

PARENT LIAISON/ AMBASSADOR (3)

INSTRUCTIONAL SPECIALIST/COACH (5)

CLERK

FINANCE SPECIALIST

LITERACY COACH

COORDINATOR (2)

CURRICULUM CONTENT TRAINER/SPECIALIST (7)

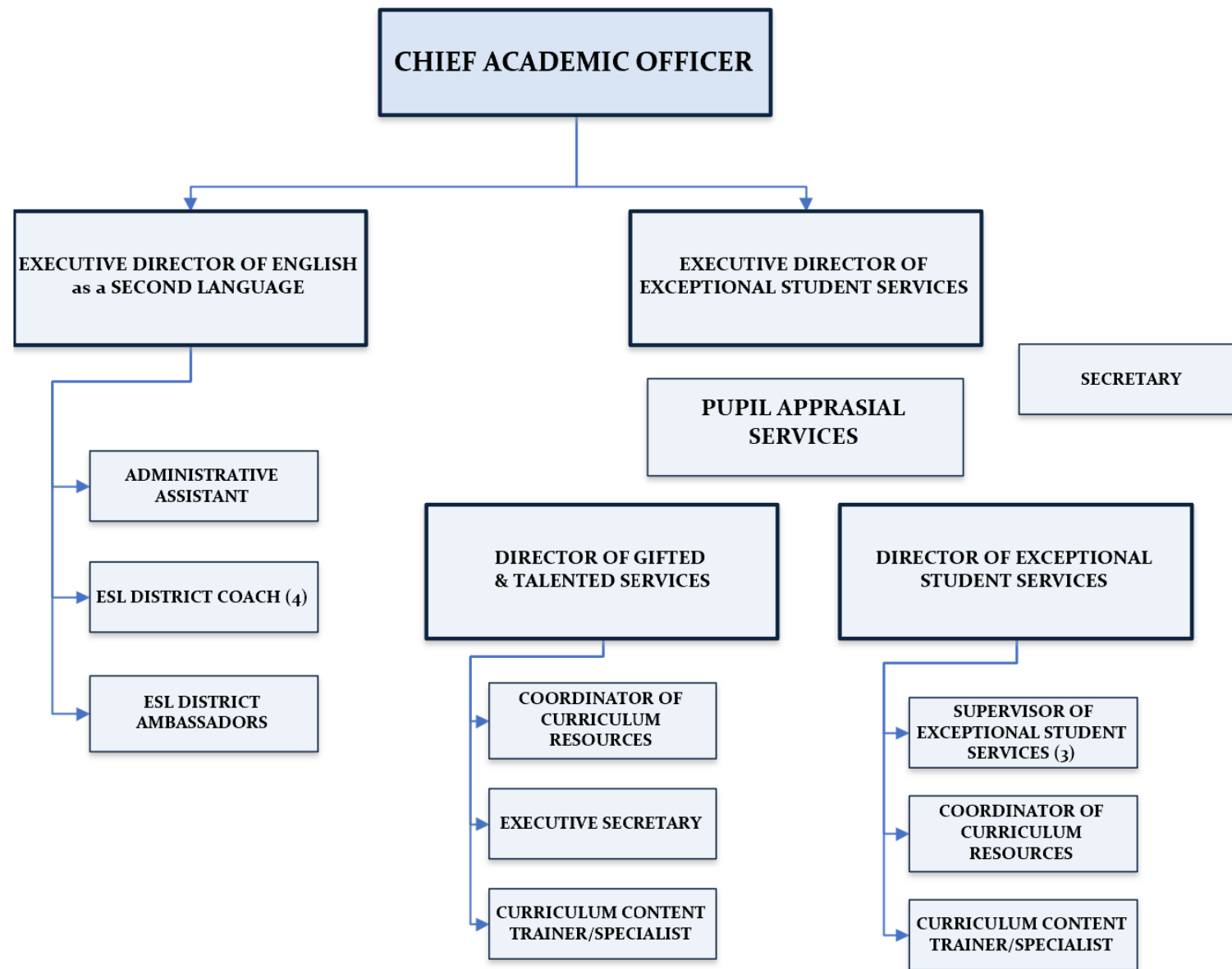
PROFESSIONAL DEVELOPMENT SPECIALIST

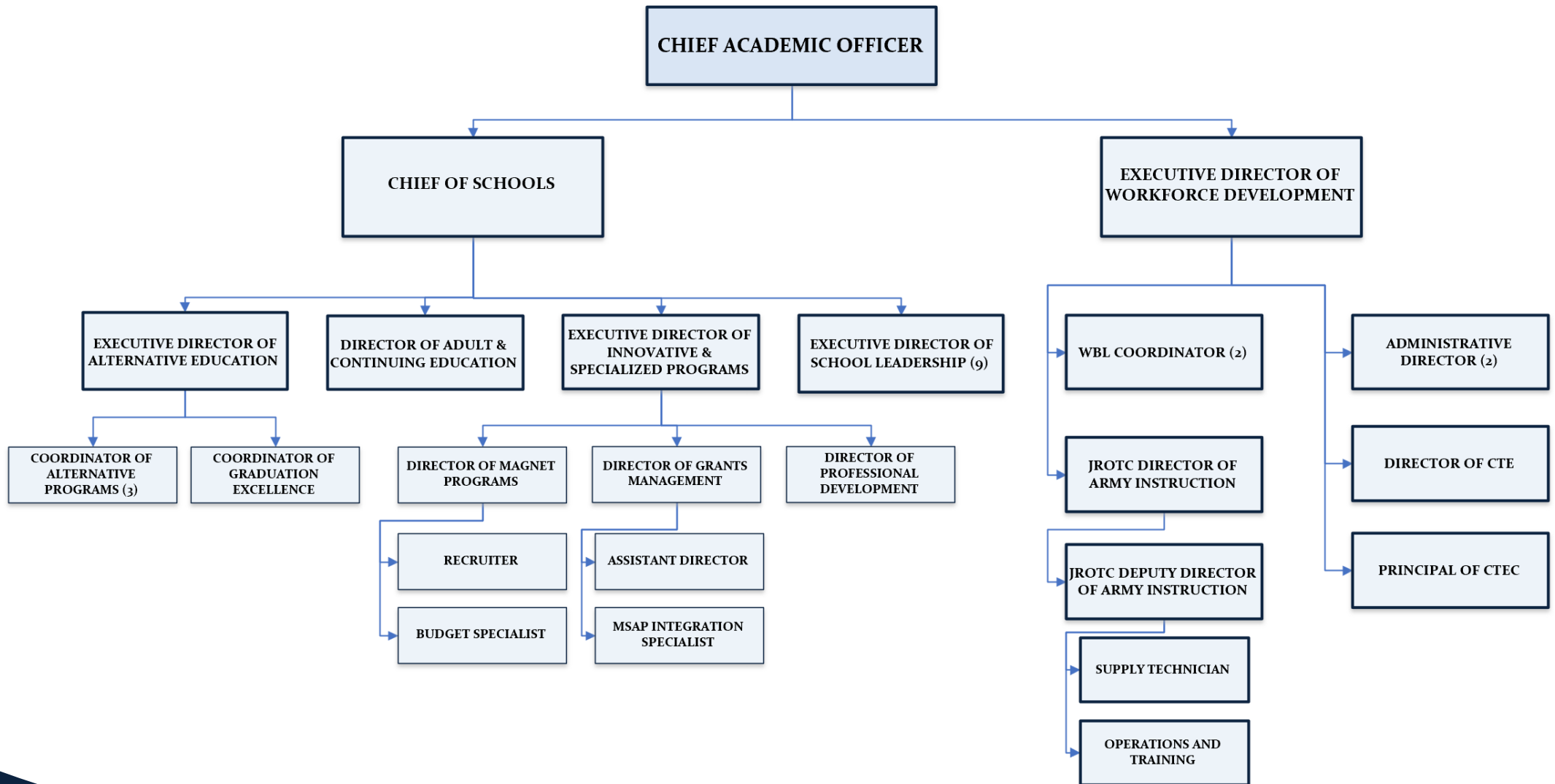
COORDINATOR (4)

LITERACY COACH (4)

CURRICULUM CONTENT TRAINER/SPECIALIST (4)

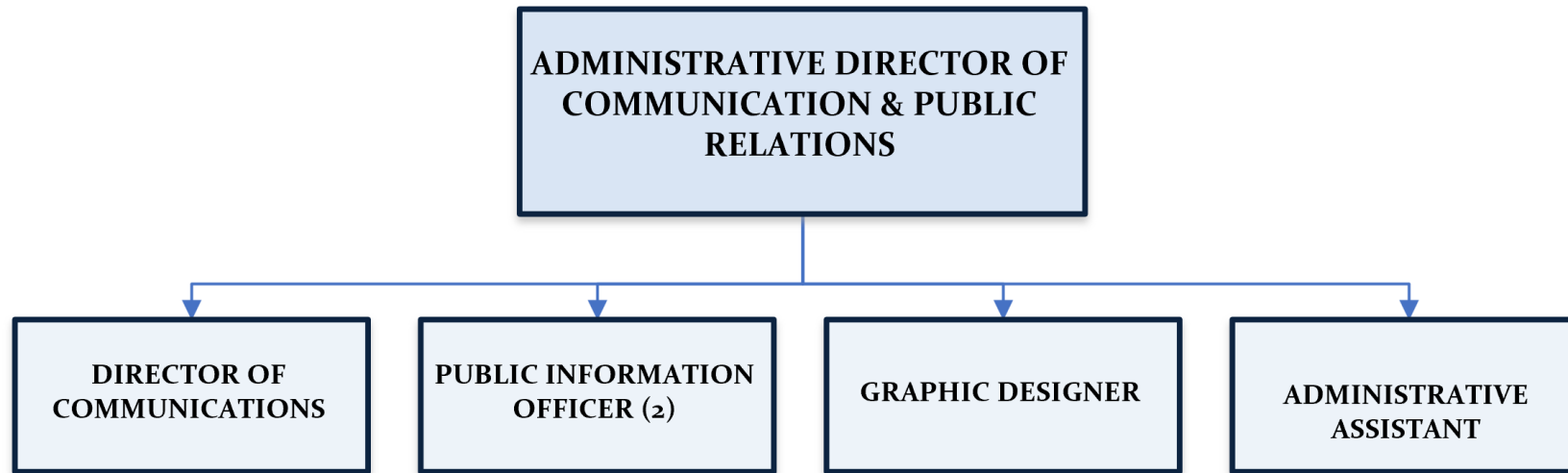
ADMINISTRATIVE ASSISTANT





EAST BATON ROUGE PARISH SCHOOL SYSTEM

ORGANIZATIONAL CHART



Communication & Public Relations Department Details