

# ST. GEORGE SCHOOLS WHAT YOU NEED TO KNOW!

This change would shift certain schools, staff, and funding from the East Baton Rouge Parish School System to the new St. George district, reflecting a significant district shift.

## Teachers & Staff



# 478

### TEACHERS & STAFF

Current EBRPSS employees working at schools in the St. George area.



### Teachers Can Stay with EBRPSS

Staff keep their jobs with EBRPSS unless they choose to switch to SGCSS.



### WARNING Switch Cost Benefits



Teachers leaving EBRPSS for St. George lose tenure and vested insurance benefits.

## Student Mobility & Enrollment

# MAY 16

### DEADLINE

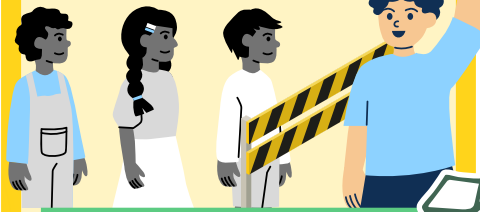
If enrolled by this date, you can stay until your "grade band" ends.

### EBRPSS Students Get Priority

When reapplying for the next school level, EBRPSS students get first priority.

### Selective School Waitlist Rules

St. George students cannot take spots from EBR students on selective school waitlists.



### ? Traditional Students Future

Continued placement for students on administrative transfer/school choice not guaranteed. (Waiting on St. George decision)

## Funding & The Future

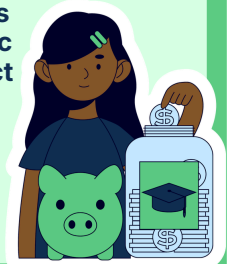
# -\$111 MILLION

### FUNDING LOSS

EBRPSS might lose this total amount in state and local funding.

### Funding Follows the Student

Money moves to the specific school district where the student is actually enrolled.



# +\$40 MILLION

### SAVED YEARLY

EBRPSS saves this because they will no longer run the St. George schools.